
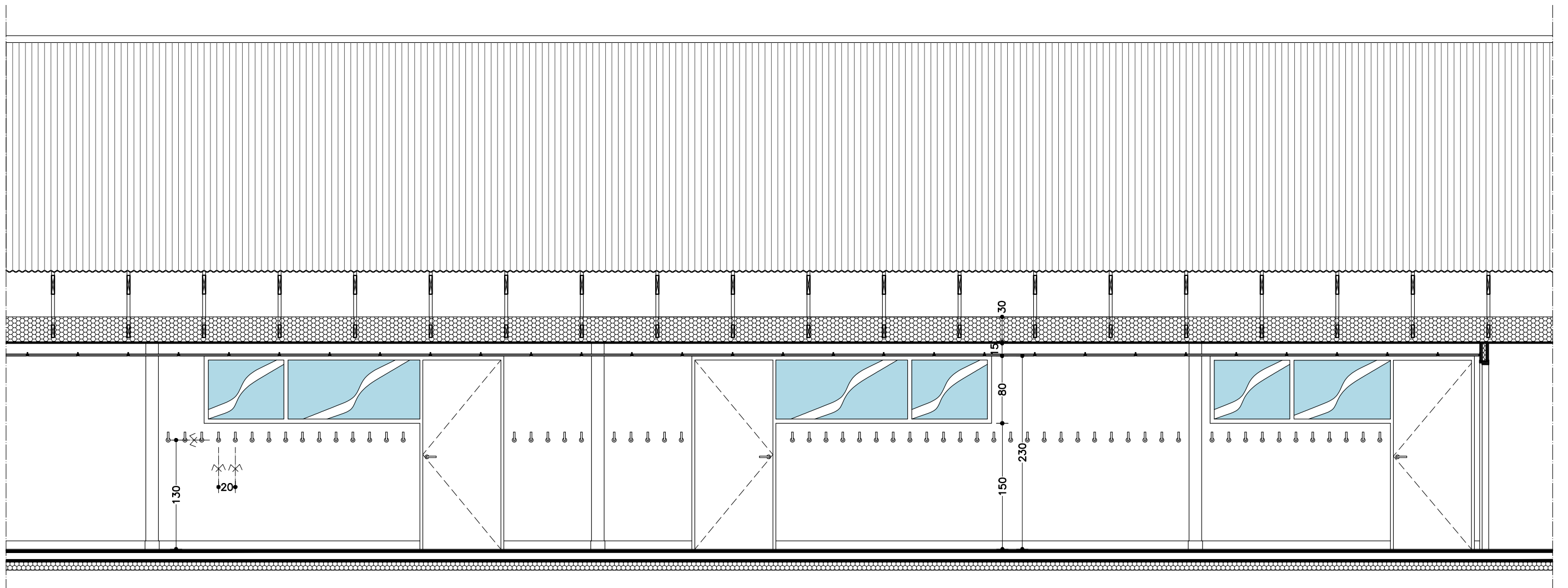
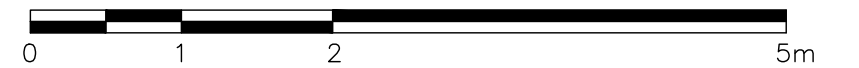


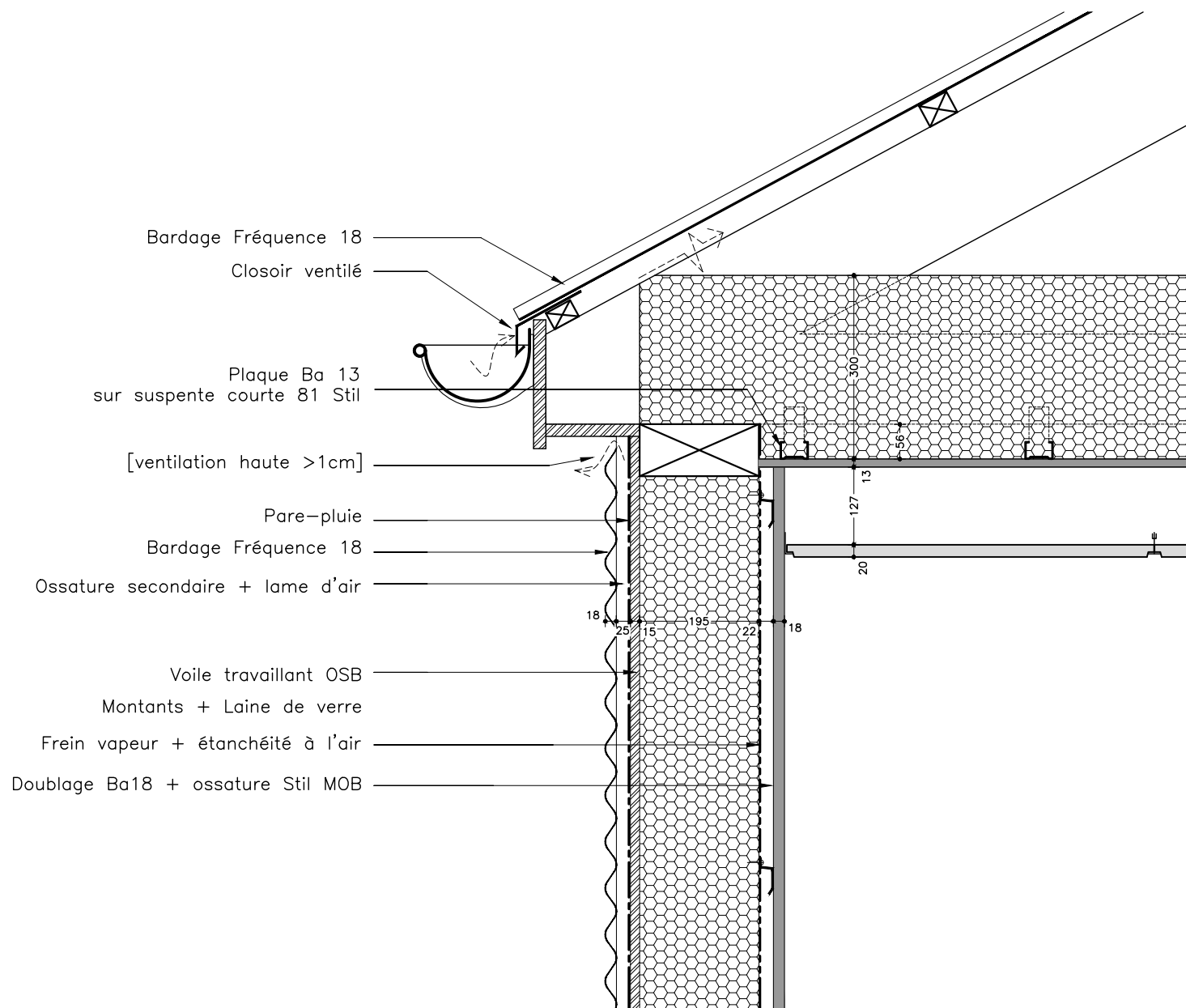
DATE	IND	PAR	MODIFICATION
REF FICHER			T53_301_plans-coupes-façade_PRO.dwg

 <p>1, rue de la Bertache - 89100 SENS Tél.: 03 86 64 44 31 - Fax.: 03 86 65 71 56 e-mail: didier-michelon@wanadoo.fr</p>		<p>Maître d'ouvrage : Mairie de Domats 6, place de l'église - 89150 DOMATS</p> <p>Construction de 3 classes élémentaires</p>		<p>401 / 53</p>
		<p>Carnet de détails</p> <p>ECHELLE : 1/50 - 1/10 - 1/5</p>		
		MISSION	PRO	
		DATE	5/12/2017	
		NOMENCLATURE :		

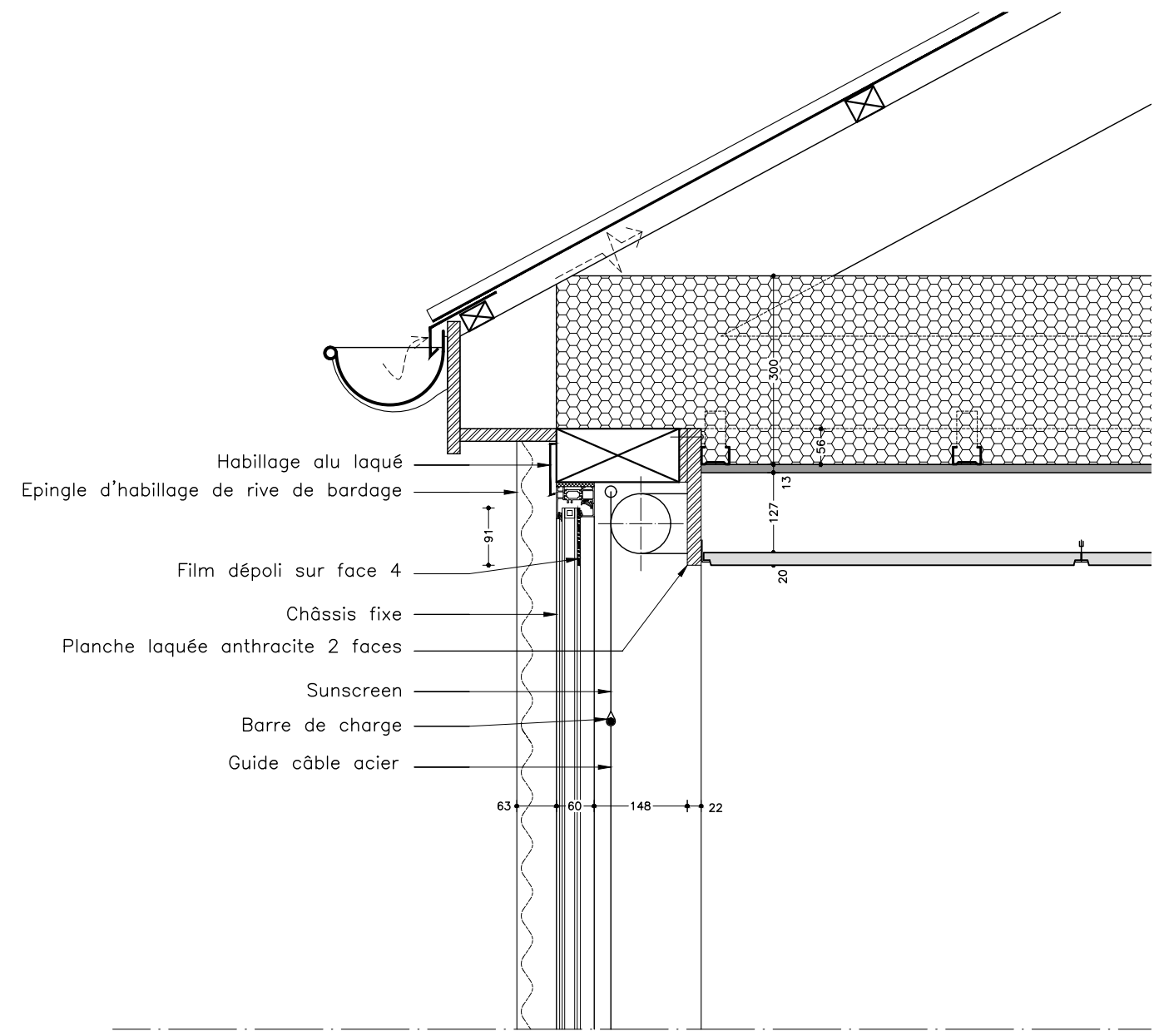
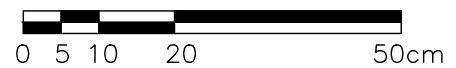


D1



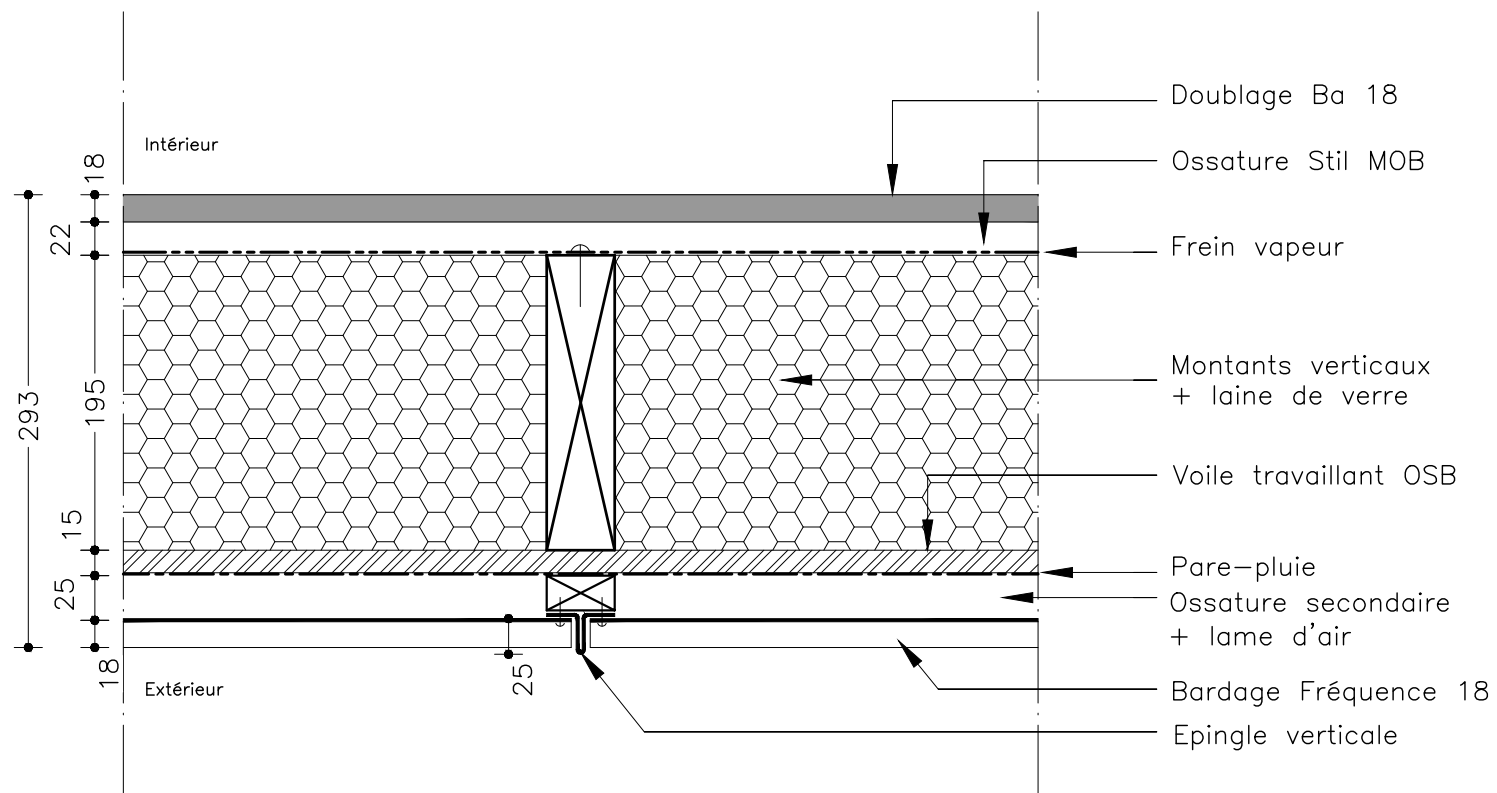


D2



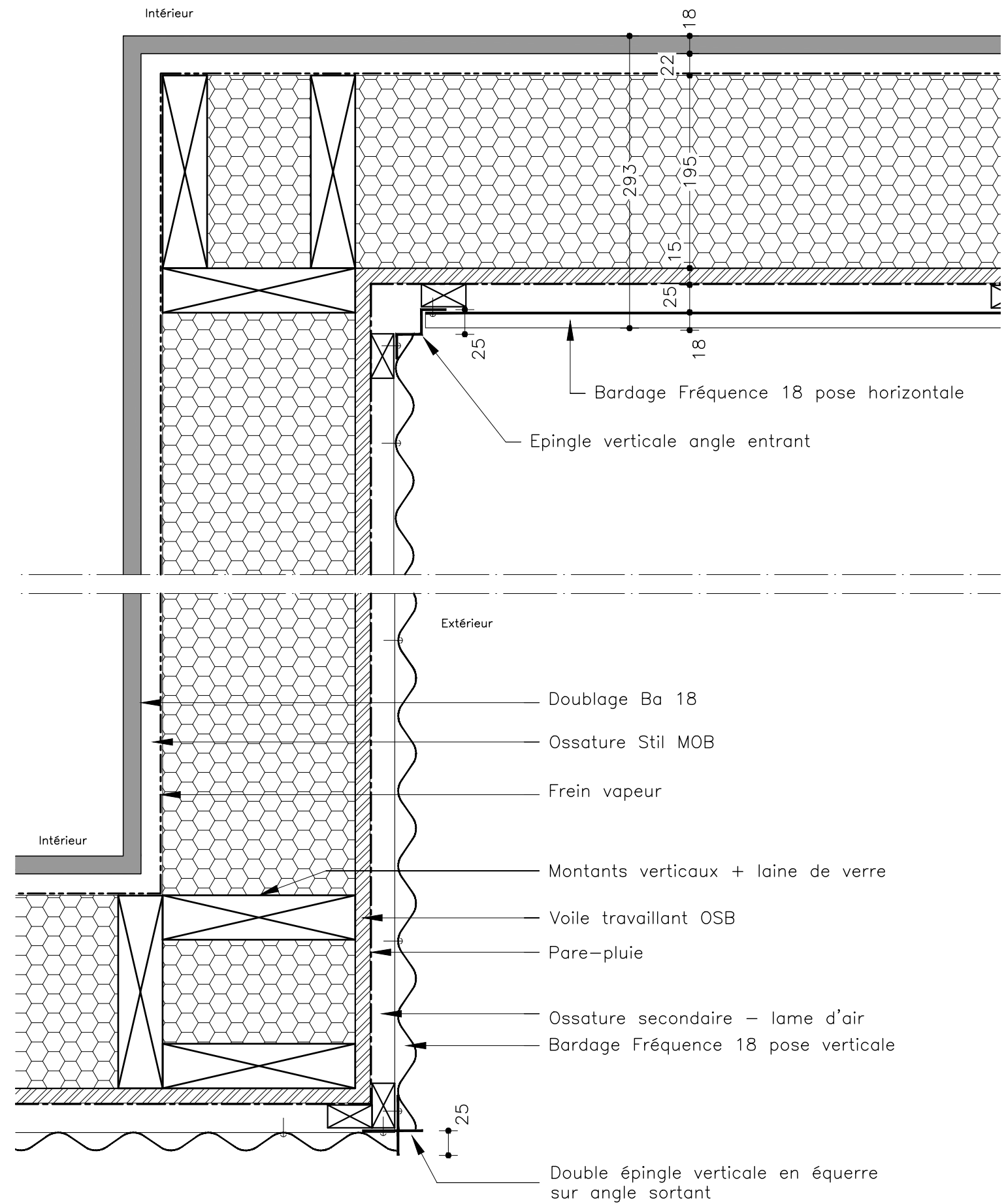
D3





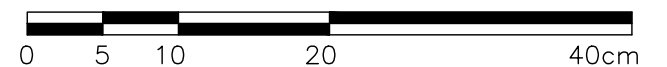
- Doublage Ba 18
- Ossature Stil MOB
- Frein vapeur
- Montants verticaux + laine de verre
- Voile travaillant OSB
- Pare-pluie
- Ossature secondaire + lame d'air
- Bardage Fréquence 18
- Epingle verticale

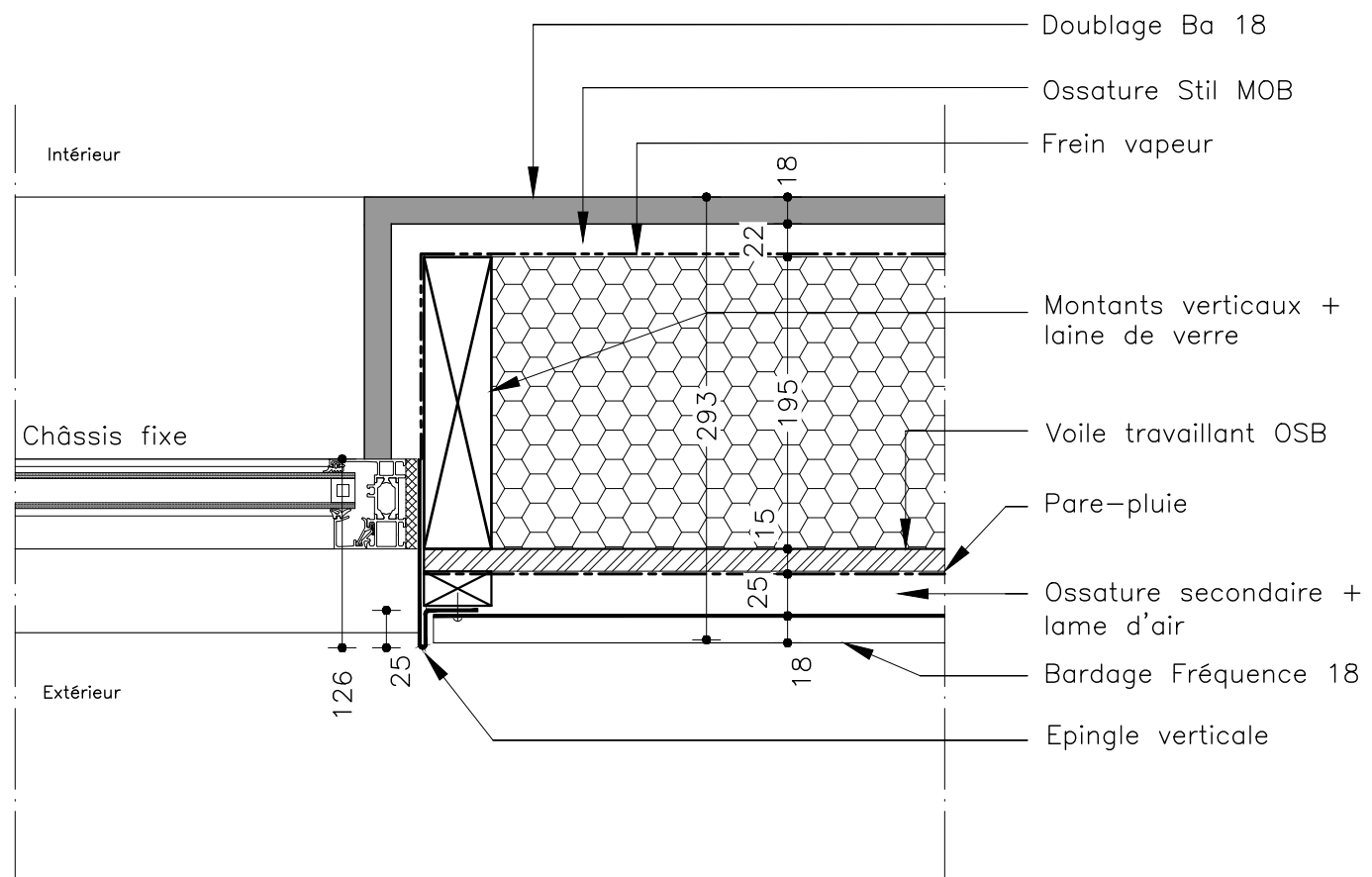
D4



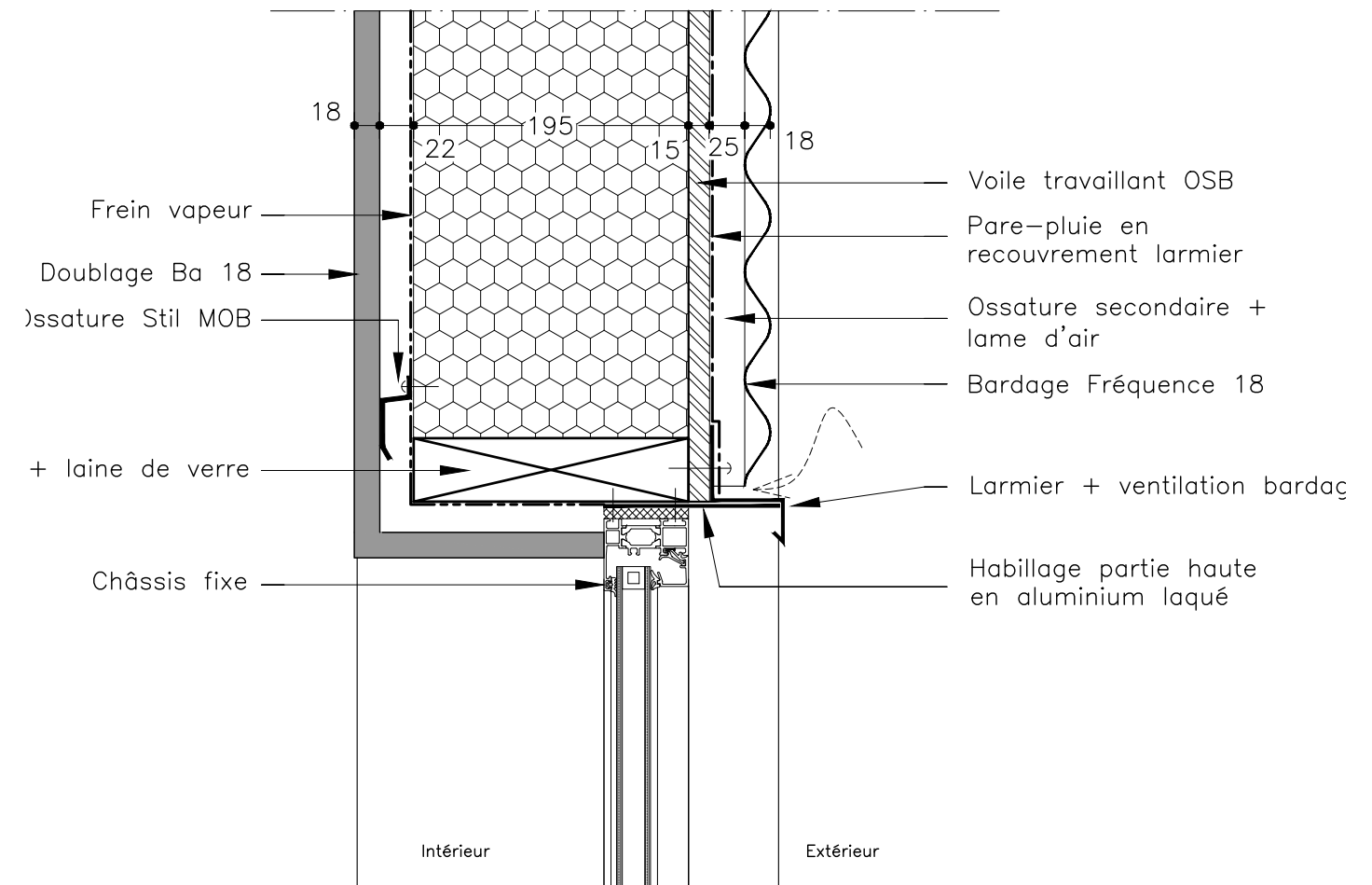
- Doublage Ba 18
- Ossature Stil MOB
- Frein vapeur
- Montants verticaux + laine de verre
- Voile travaillant OSB
- Pare-pluie
- Ossature secondaire + lame d'air
- Bardage Fréquence 18 pose verticale
- Double épingle verticale en équerre sur angle sortant

D5



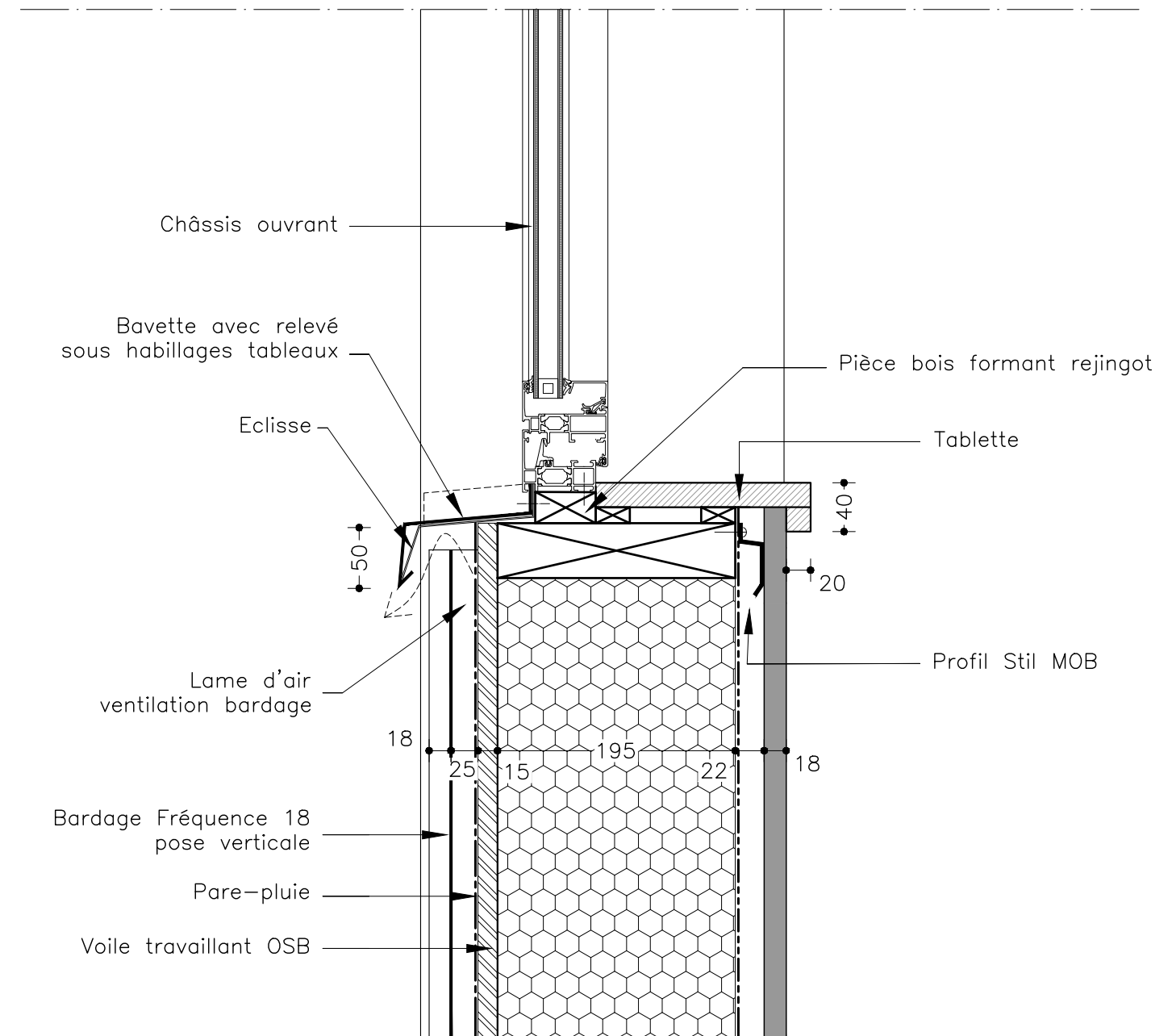


D6

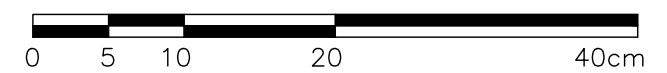


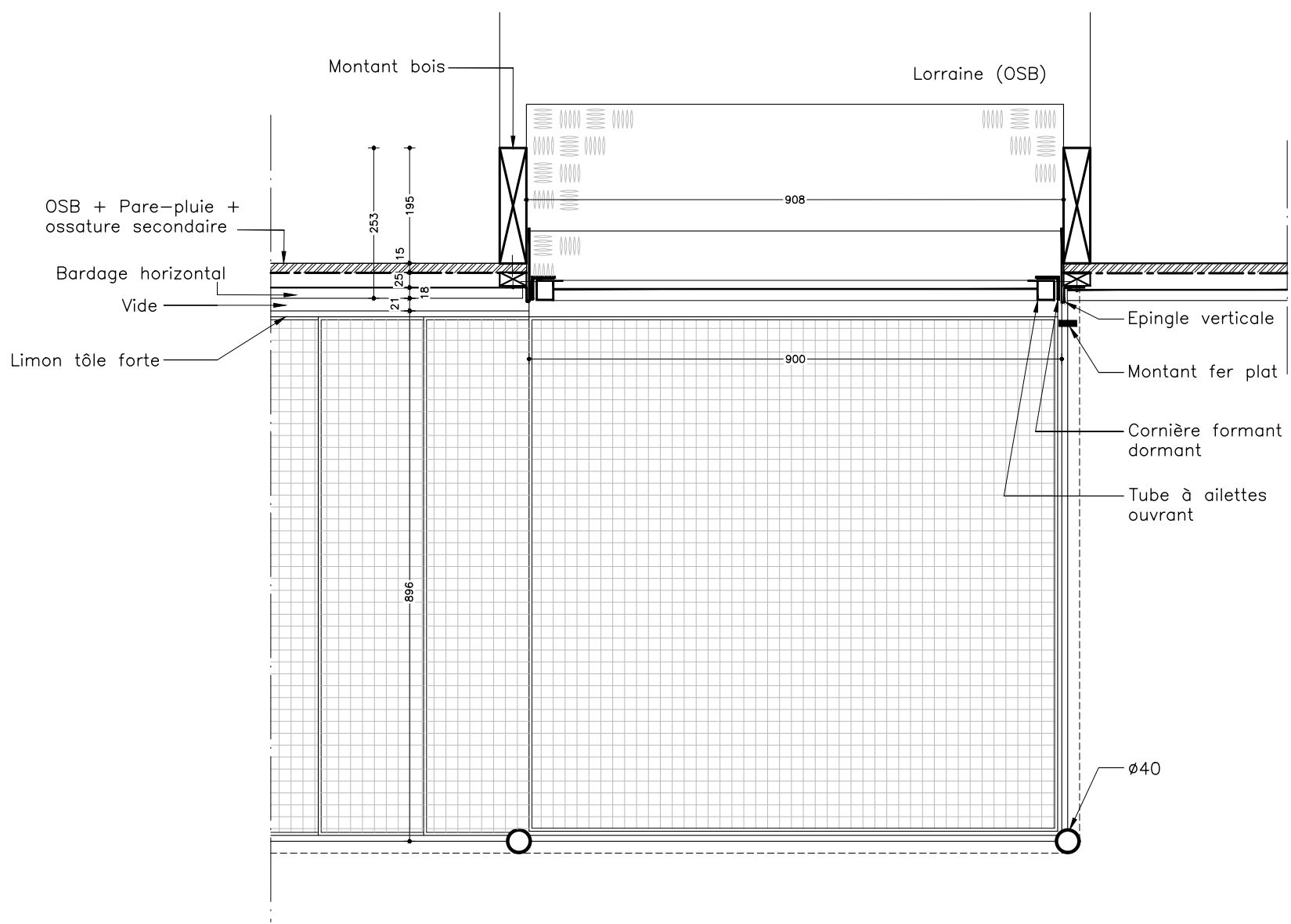
D7



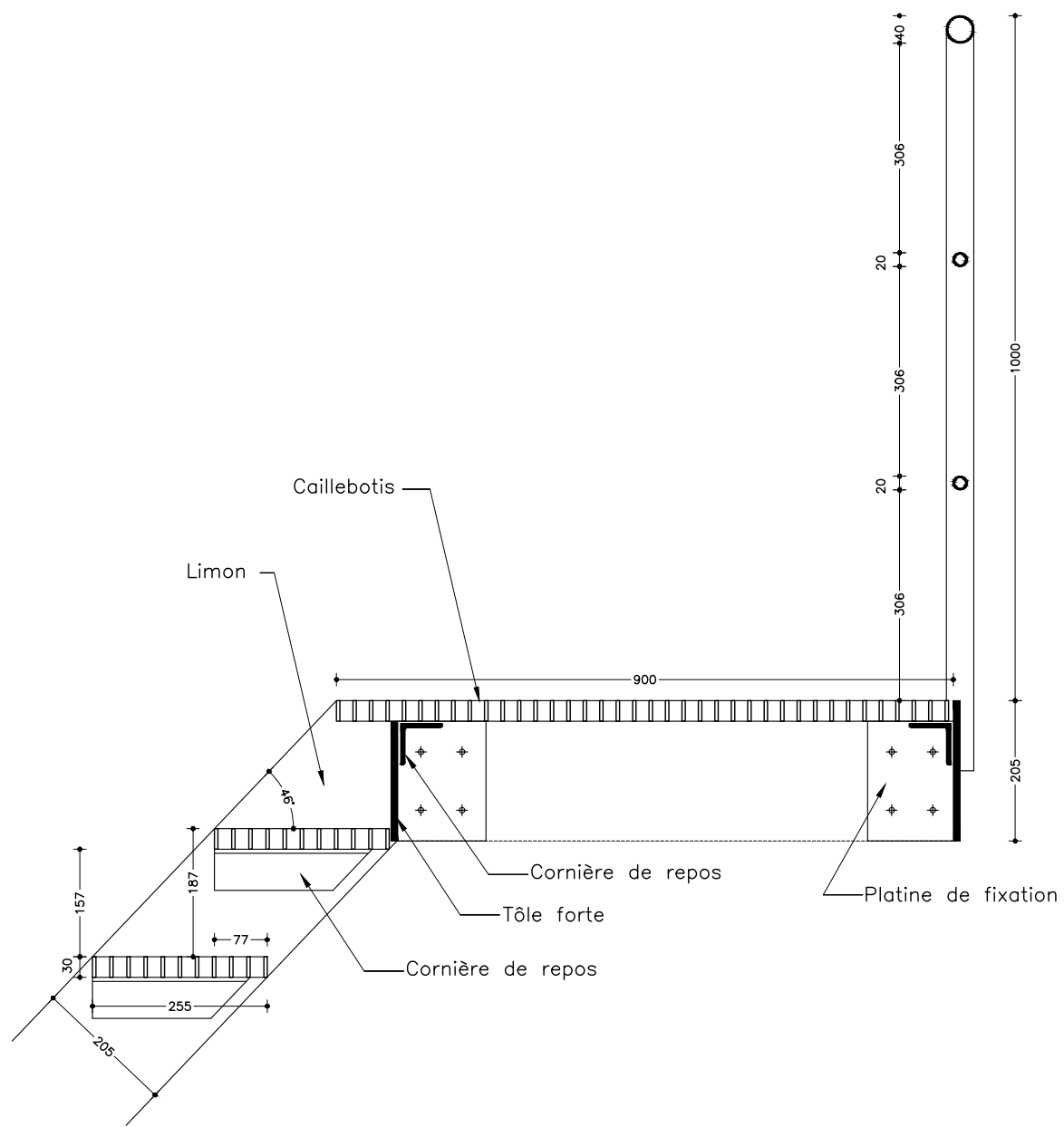


D8

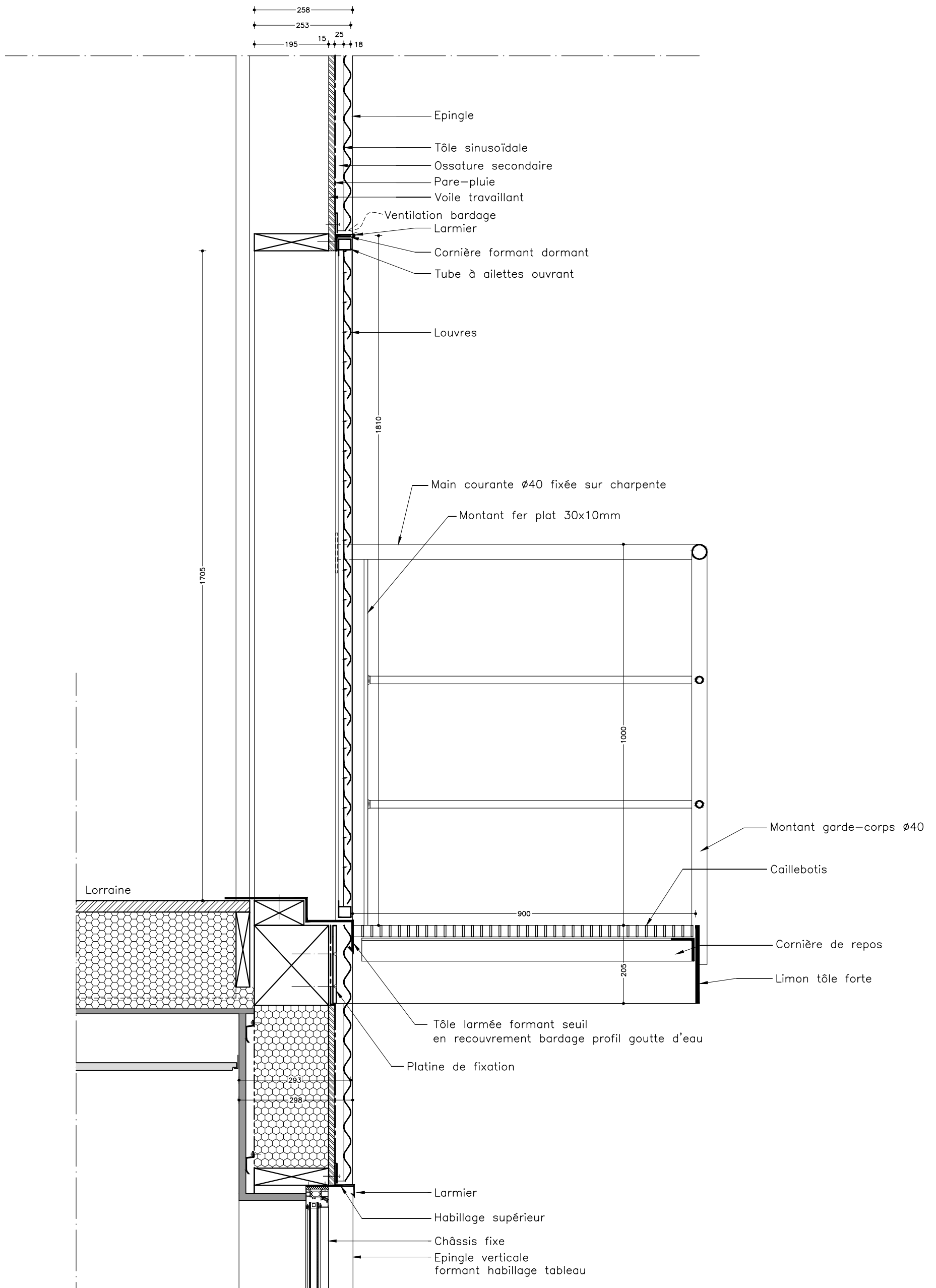




D9

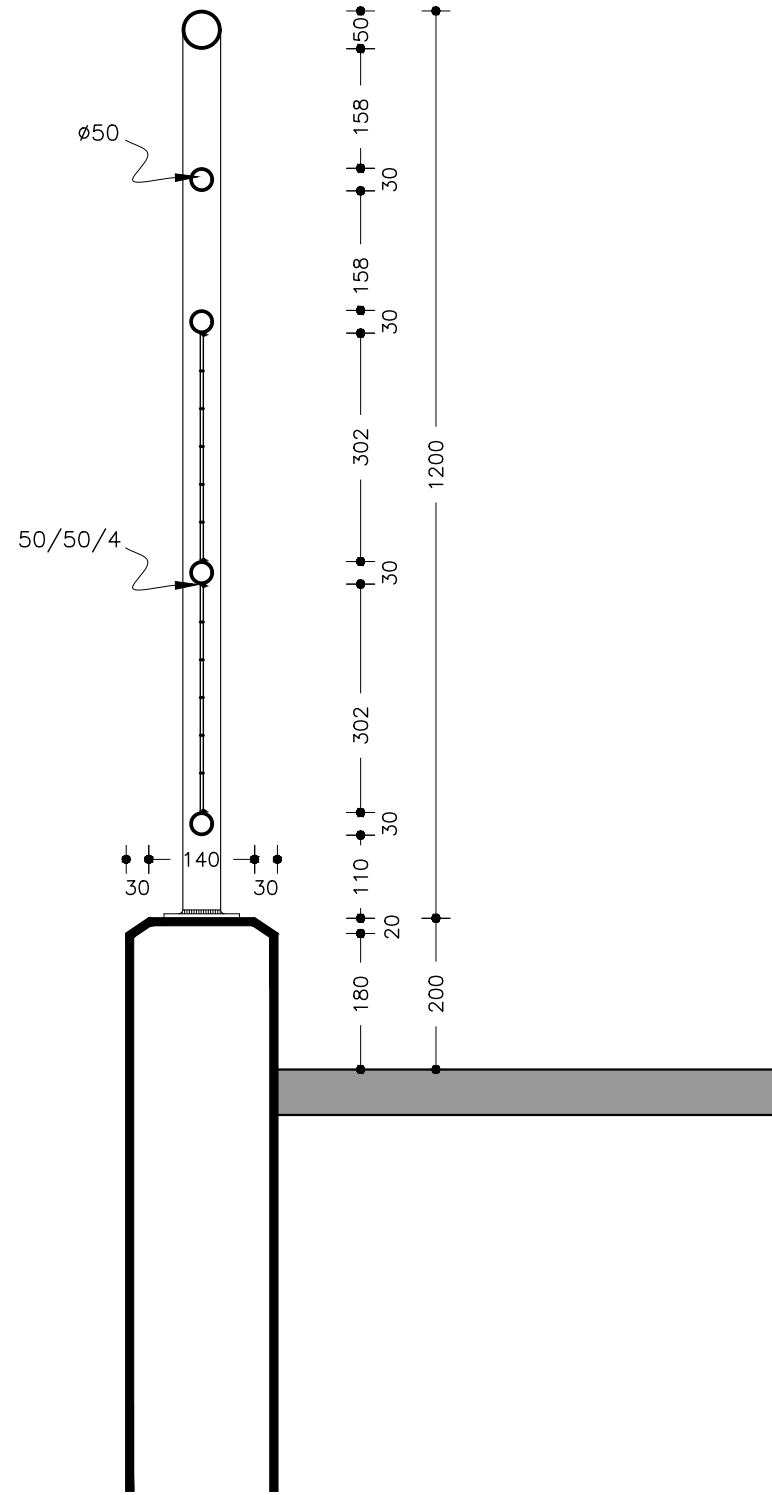
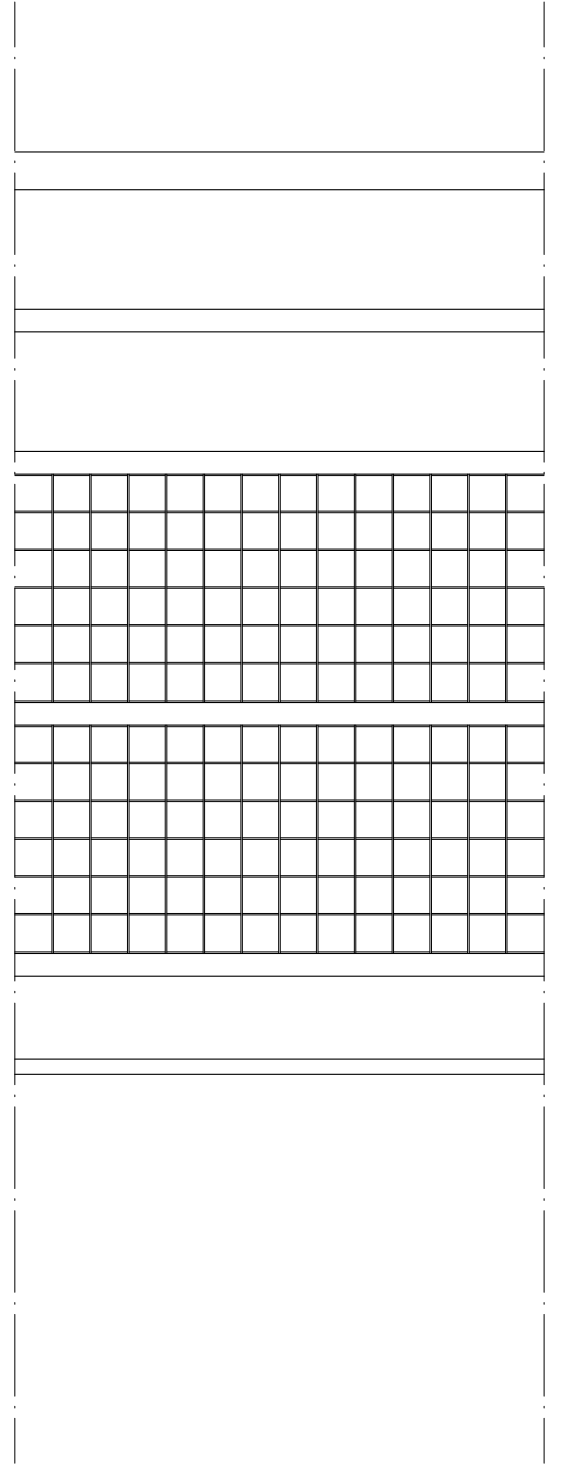


D10

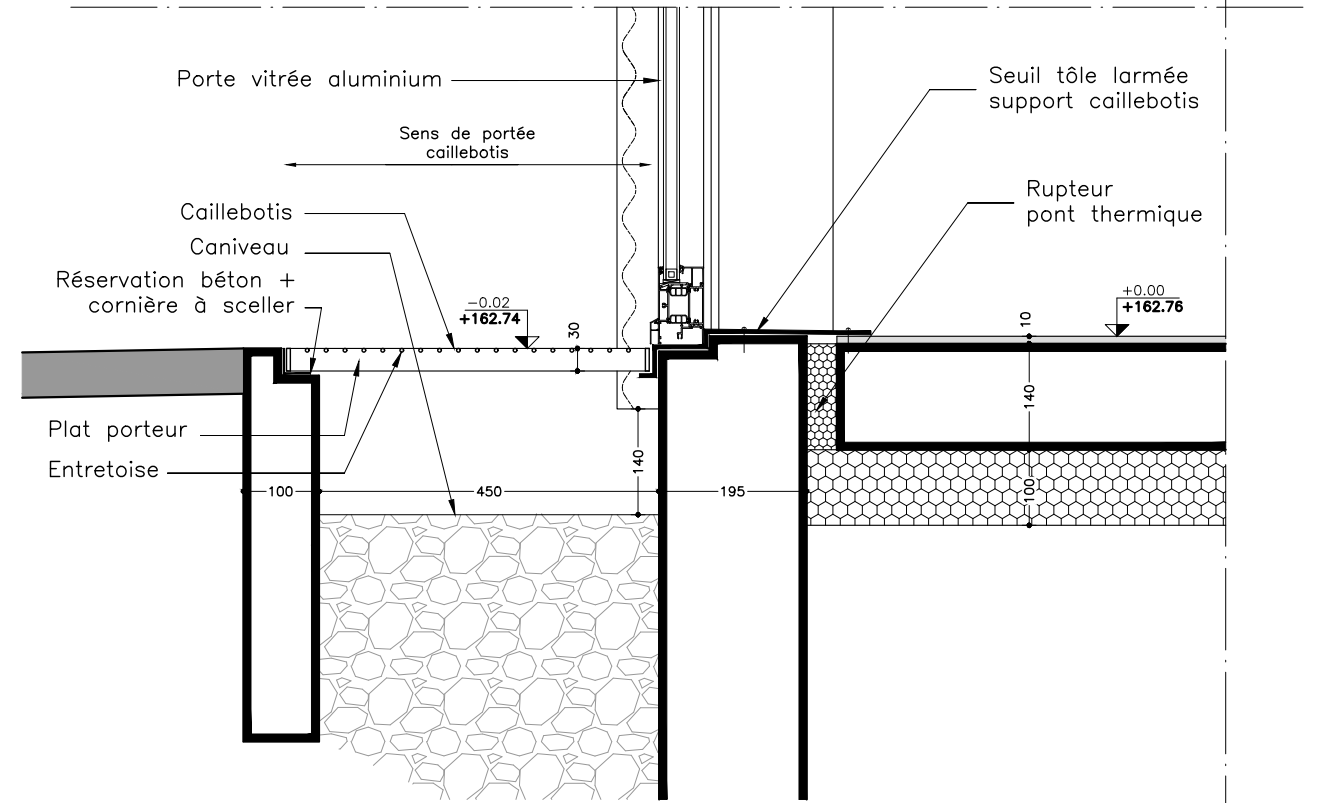
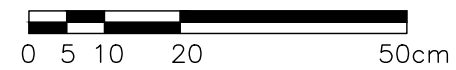


D11





D12



D13

